

Visualization and Interaction with Synoptics Implementation based in SVG



SVG Open 2008

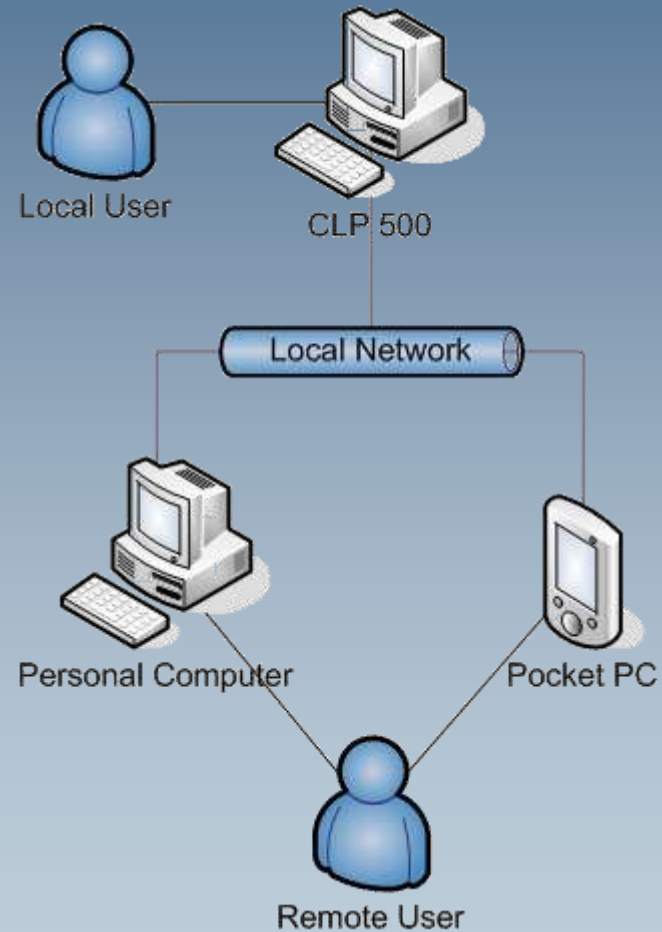
2008-08-28, Nuremberg

Schedule

- Introduction
- Related Work
- Solution Proposal
- Implementation
- Results
- Conclusion
- Questions

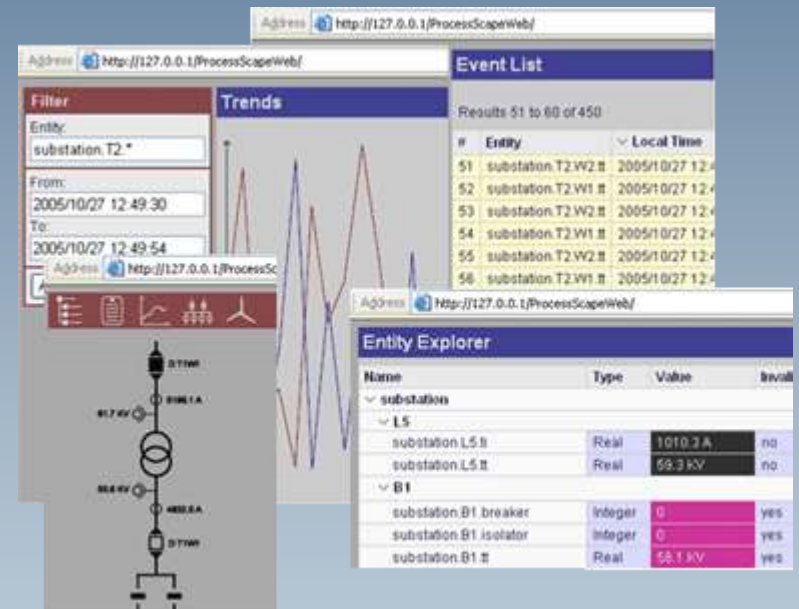
Introduction

- SCADA and Synoptics
- CLP 500 and Web HMI

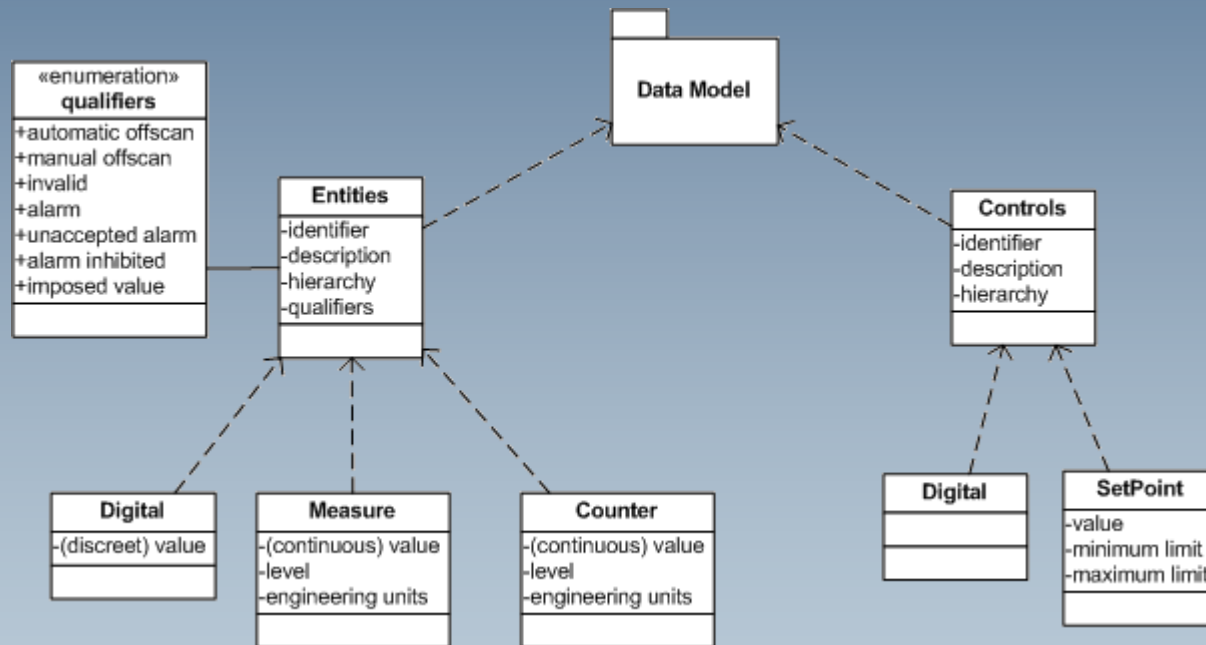


Related Work

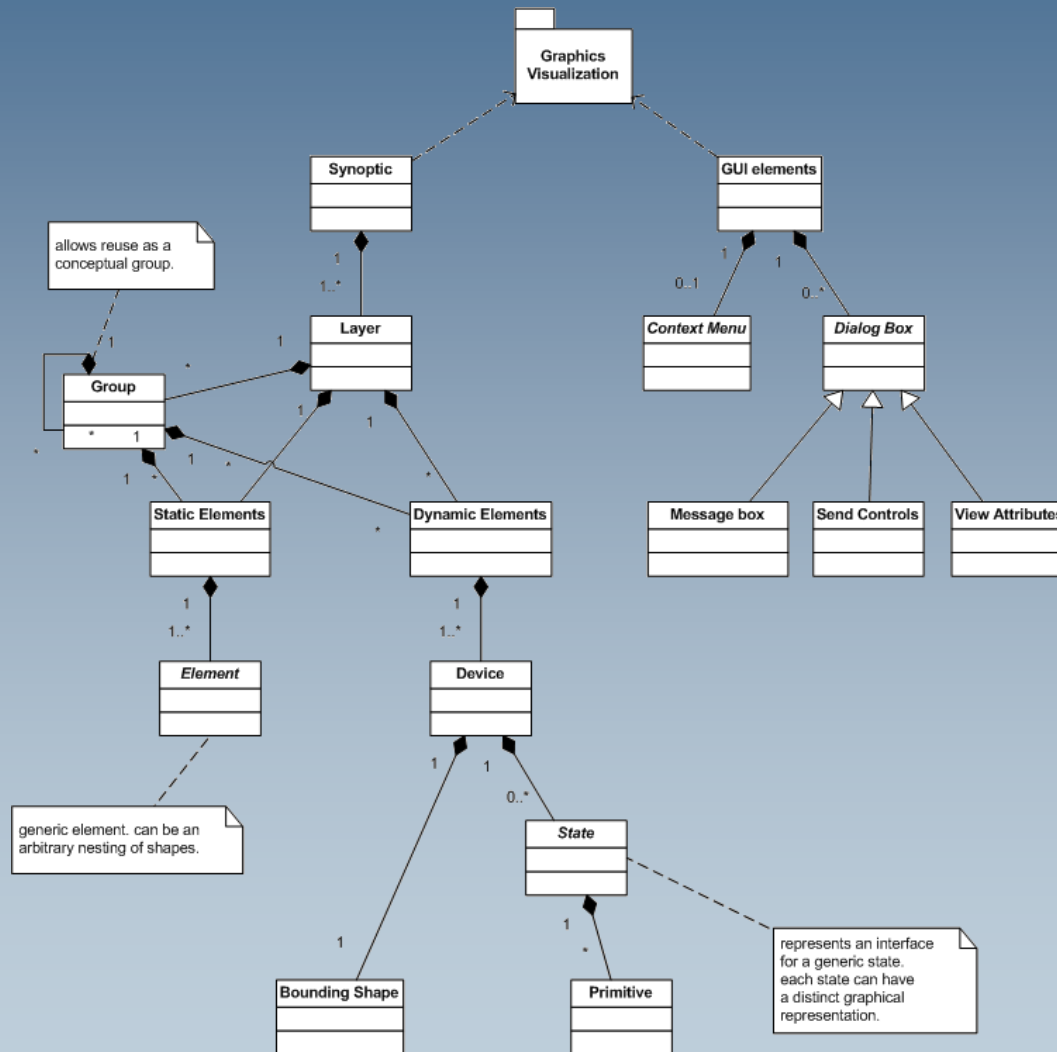
- Mobile SCADA with Thin Clients – a Web Demonstration
- SVG for SCADA Applications
- Control Systems and Real-Time Metering Systems
- ProcessScapeWeb



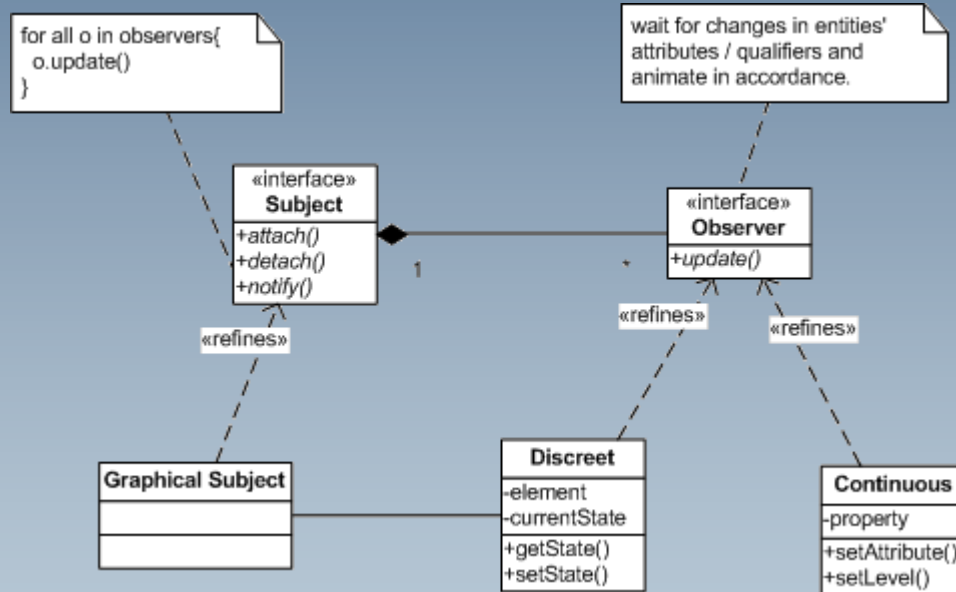
Requirements



Implementation



Implementation



Implementation

Attributes Window [X]

Identifier: OSCRRL3REG1RTTOM
Description: TOMADA

Hierarchy Level 1: CRRL 30kV
Hierarchy Level 2: REGULAÇÃO TENSÃO 1
Hierarchy Level 3:
Hierarchy Level 4:

Level: Normal
Value: 299
Imposed Value: No
Invalid: No
Manual Offscan: No
Automatic Offscan: No
Undetermined: No
Alarm Unaccepted: Yes

SECC BARR 1 ABRIR (OSCRRL5PB--S1DES)
SECC BARR 1 FECHAR (OSCRRL5PB--S1LIG)

Control Window [X]

Identifier: OSCRRL5PB--S1LIG
Description: SECC BARR 1 FECHAR

Hierarchy Level 1: CRRL 60kV
Hierarchy Level 2: SECCION BARRAS AT
Hierarchy Level 3:
Hierarchy Level 4:

Terminated: Yes
Success: Yes
Status Message: OK

Abort Execute Close

Control Window [X]

Identifier: OSCRRL3BC1-E18BL
Description: SEM MIN1 LIG

Hierarchy Level 1: CRRL 30kV
Hierarchy Level 2: BAT CONDENS I
Hierarchy Level 3:
Hierarchy Level 4:

Terminated: No
Success: No
Status Message:

Value (0 - 59):

Abort Execute Close

Error: Information [X]

This device has no associated controls!

OK

Results

(Demonstration)

Conclusion

- Project goal was achieved
- Serious difficulties faced
- Lots of foreseen improvements

Acknowledgement

- Co-authors
- Automation and Protection team
- Efacec Engenharia

Questions? Suggestions?

(Thank you for your attention! 😊)